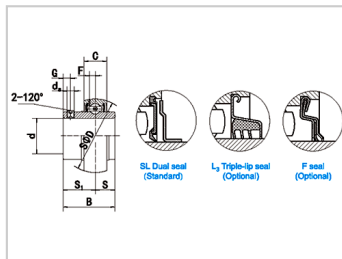
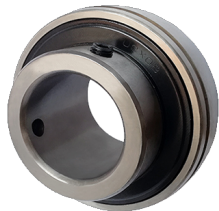


Insert Bearings

UCX Series-UCX20-64



Bearing Number : UCX20-64

Boundary dimensions(mm) :

d :	3-1/2
D :	190
B :	117.5
C :	43
S :	49.2
S1 :	68.3
G :	18
ds :	M16 × 1.5
F :	13.7
Dynamic equivalent radial load(N) :	133000
Radial rated static load(N) :	105000
Mass(kg) :	8.56

: